

VIDEO GUIDANCE TERMINAL



Guidance Terminal

Guidance Terminal is the new embedded intelligent parking lot management device of high performance. Integrated with network switch, it is convenient to access to parking space detection cameras. Its wall-mounted cabinet is easy to install in the underground parking lot. Six 3.5-inch HDD can be installed to meet the demand of large capacity distributed video storage. It can control the LED parking space guidance display to guide vehicle parking.

The guidance terminal is widely used in large parking lot of the community, business center and hotels. It greatly shortens the parking time and vehicle searching time of customers, and improves the utilization of the spare parking spaces. Live view and video record can effectively eradicate the blind spot in the parking lot.

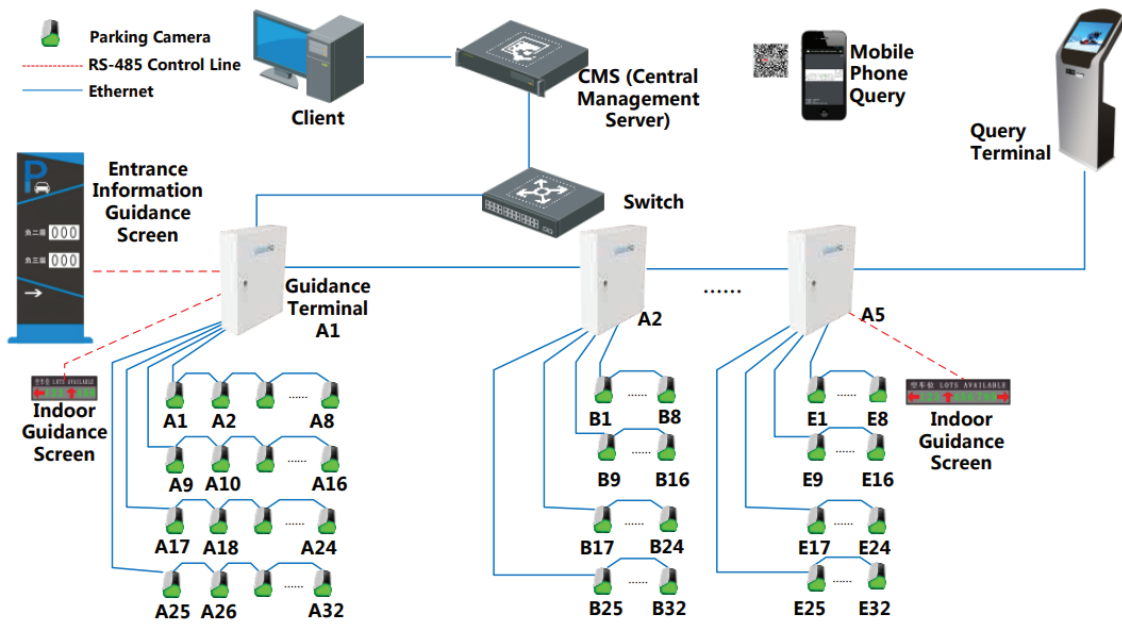
Key Features

- 16 100M RJ45 interfaces, 8 TitanHZ POE interfaces , connecting up to 32 parking cameras; 4 GB RJ45 interfaces; support TPM cascade and data upload, light module reserved.
- Support parking space statistics and LED display control, able to show the remaining parking spaces both online or offline.
- Embedded algorithm.
- IP address automatic allocation.
- 485 transmission, the platform controls the LED display directly through the guidance terminal.
- Large capacity distributed storage,six 3.5-inch HDD slots, 32-ch 2Mbps stream, keeping the record up to 30 days.
- Accessible by web browser, integrated SDK.

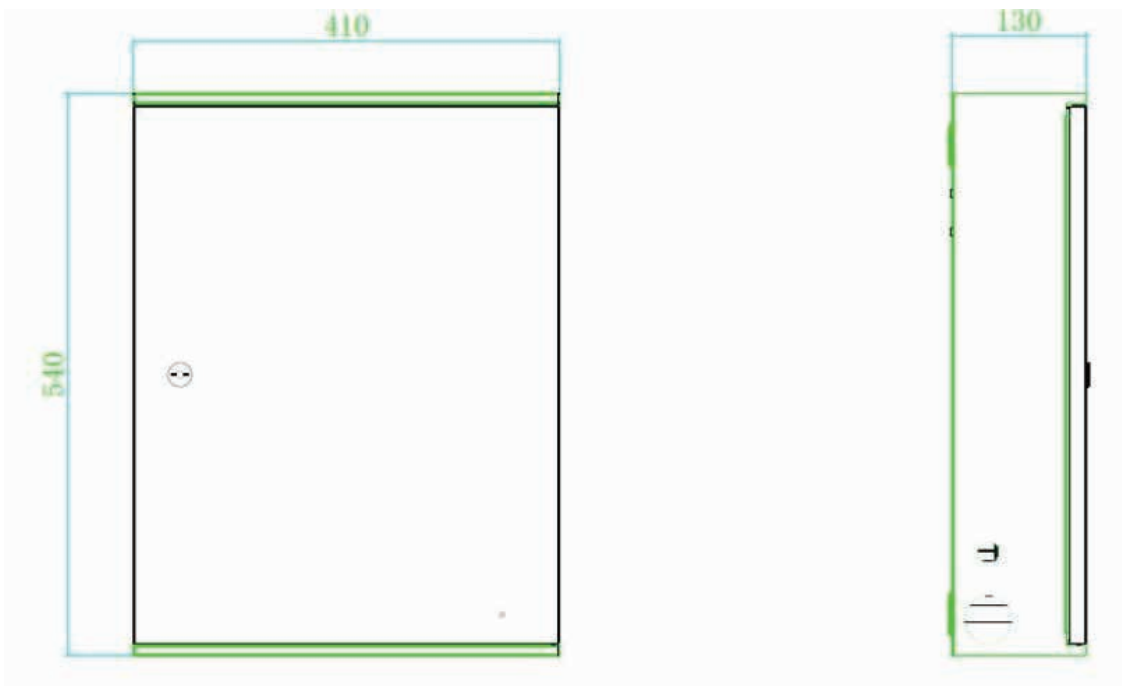
Specification

Model	IB-MFP711-F-8M
System Parameters	
CPU	High Performance ARM A17 Digital Media Processor
Operating System	Embedded Linux Operating System
Operation Interface	WEB
Input/Output Parameter	
Network Video Input	Access of 16 dual cameras 32 parking cameras
Audio Input	1-ch Audio Input
Audio Output	1-ch Audio Output
Alarm Input	3-ch Alarm Input
Alarm Output	3-ch Alarm Output
Interface Parameter	
RS485 Interface	2 RS485 Interfaces
USB Interface	1 USB2.0 Interfaces, 1 USB3.0 Interface
HDMI Interface	1 HDMI Interface
Network Interface	16 100M Internal Ethernet Interfaces, including 8 TitanHZ POE Ethernet Interfaces; 4 1000M External Ethernet Interfaces
Optical Interface	1 Optical Interface
Function Parameter	
Data Storage	Parking camera capture picture and video storage, support up to 6 HDD
Data Upload	Support data upload and video stream transfer
General Specification	
Power Supply	AC220V, Standard
Power	<500w
Mechanical Characteristics	Dimension: 410mm (Width) x130mm (Depth) x540mm (Height)
Working Environment	Working Temperature -10°C~50°C,Working Humidity 10%~90%

Typical Application



Dimension



Mailing Address

VOSTOK Trading L.L.C,
 304,3rd Floor,Al Tawhidi Building,
 Khaleed Bin Waleed Road,
 P.O. Box: 27106 - Dubai,
 UNITED ARAB EMIRATES.

Contact Details

Tel : (905) 331-2695
Fax : (905) 331-2696
Email : sales@titanhz.com

Social Media

www.facebook.com/pages/Titanhz/151150798404988
plus.google.com/112635276746321262748/posts
titanhz-anpr-systems.blogspot.in
twitter.com/titanHz